

ATG Europe Company background



FACTS & FIGURES



**SPACE
HIGH-TECH
BIG SCIENCE
DEFENCE**

40+ YEARS IN BUSINESS



300+ STAFF



€ 3,9 M EBITDA



€38,4 M NET SALES

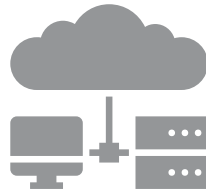


OUR BUSINESS LINES & KEY COMPETENCES

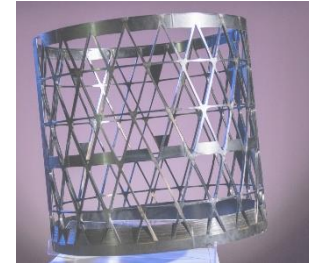
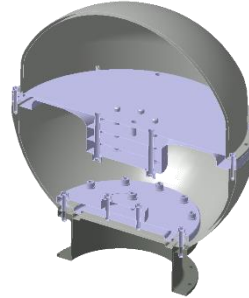
**Professional
Consultancy**



**IT
Services**



SpaceLabs



Loan
Employment

Consulting
Services

Managed
Services

EngineeringLab

Product
Development
-
Engineering &
Review services

CompositesLab

Lightweight,
cost-effective
composite
structures;
ATG-patented

VirtualLab

Engineering and
Communication
tools, based on
VR & AR
technology

MediaLab

Stunning
2D & 3D
visualisations;
stills & movies

On-Site at customer premises

From ATG premises, or on-site at customer

OUR BUSINESS MODELS

How would you like to work with us?



ATG has extensive experience in transitioning between business models, having successfully migrated *on-site consultancy support activities* to both *On-site* and *Off-site Work Packages / Services*.

OUR LOCATIONS



11 Countries

20 Locations

6 Companies

- NL
- DE
- IR
- IT
- ES
- UK



OUR CUSTOMERS



KONGSBERG

EUMETSAT



TNO innovation for life



EUROCONTROL

ASML



sck cen



F4E

Provision of Engineering Support Services



PROVISION OF ENGINEERING SUPPORT SERVICES TO F4E

- Open Procedure F4E-OMF-1159: Provision of Engineering Support Services
- Tendered in 2021, awarded in 2022 (score 97.16 out of 100)
- 3 Frame Contracts with Task Orders in cascade
- Duration 4 years (2 + 1 + 1)
- Lot 1 – General Engineering Services: 30 Meuro LoL
- Lot 2 – Civil Engineering and Mechanical Qualification Services: 6 Meuro
- 3 partners per Lot (prime plus subcontractors). ATG prime contractor in Lot 1, subcontractor in Lot 2

CONTACT US

SAMO SIMONIAN

ATG EngineeringLab Business Unit Manager

samo.simonian@atg-europe.com

JACOB PASQUALOTTO

ATG SpaceLabs Division Manager

jacob.pasqualotto@atg-europe.com

ALBERTO DONADONI

ATG Europe CCO

alberto.donadoni@atg-europe.com

